

arda

# Where Modern Living Meets Community Harmony



“ara” embraces the essence of modern living with its innovative cluster design and minimalist aesthetic. Our concept revolves around creating spaces that seamlessly blend functionality, style, nature and community.

At “ara,” we believe in the power of sharing  
- sharing space, sharing time, and sharing value with our neighbors.

Our courtyard living concept fosters a sense of togetherness and collaboration while respecting individual needs and preferences.

Experience the future of living with “ara” - where modern design converges with sustainable living practices, and where community thrives at the heart of it all.

# STUDIO UNIT FLOOR PLANS



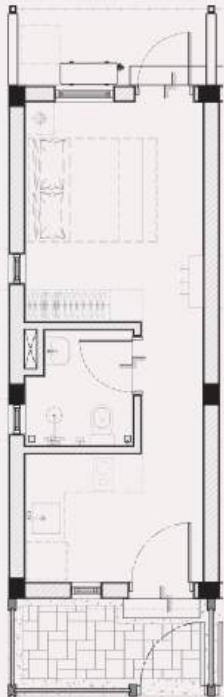
**STUDIO A**

INDOOR AREA	292 SQ.FT
OUTDOOR AREA	100 SQ.FT
TOTAL AREA	392 SQ.FT



**STUDIO B**

INDOOR AREA	270 SQ.FT
OUTDOOR AREA	92 SQ.FT
TOTAL AREA	362 SQ.FT



**STUDIO C**

INDOOR AREA	277 SQ.FT
OUTDOOR AREA	95 SQ.FT
TOTAL AREA	372 SQ.FT



**STUDIO D**

INDOOR AREA	265 SQ.FT
OUTDOOR AREA	91 SQ.FT
TOTAL AREA	356 SQ.FT

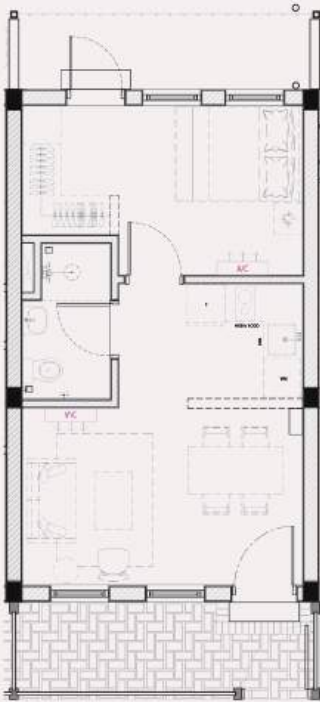


**STUDIO E**

INDOOR AREA	344 SQ.FT
OUTDOOR AREA	0 SQ.FT
TOTAL AREA	344 SQ.FT

Disclaimer - All illustrations and photographs contained in this brochure are the artist's impression only. The Developer reserves the right to modify any part or parts of the project or the building as directed or approved by the architects and/or the relevant authorities. All plans, layout, information and specifications are subject to change without notification and cannot form part of an offer or contract.

# 1 BEDROOM UNIT FLOOR PLANS



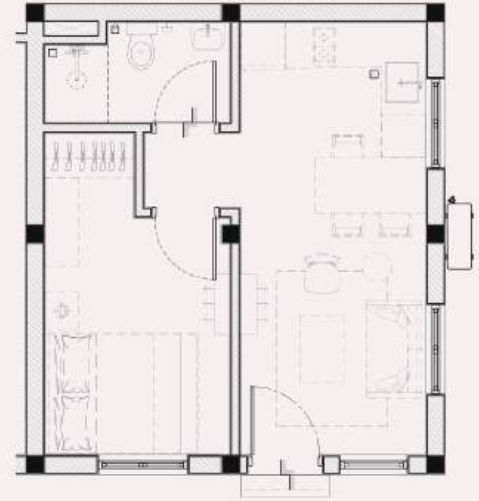
## 1 BEDROOM A

INDOOR AREA	417 SQ.FT
OUTDOOR AREA	142 SQ.FT
TOTAL AREA	559 SQ.FT



## 1 BEDROOM B

INDOOR AREA	411 SQ.FT
OUTDOOR AREA	0.00 SQ.FT
TOTAL AREA	411 SQ.FT



## 1 BEDROOM C

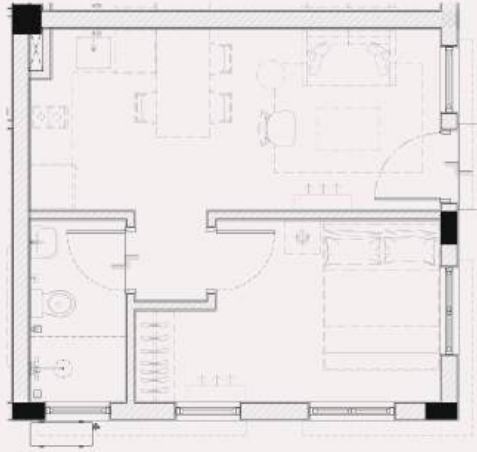
INDOOR AREA	382 SQ.FT
OUTDOOR AREA	4 SQ.FT
TOTAL AREA	386 SQ.FT

1 BEDROOM UNIT



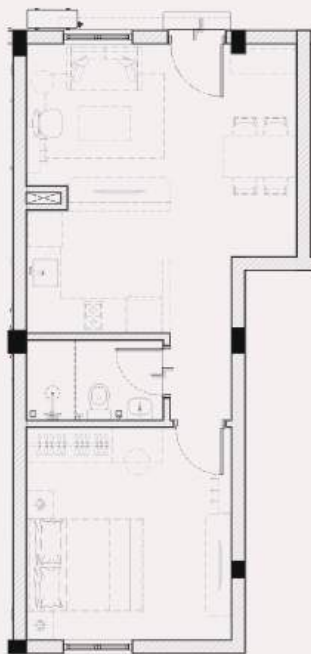
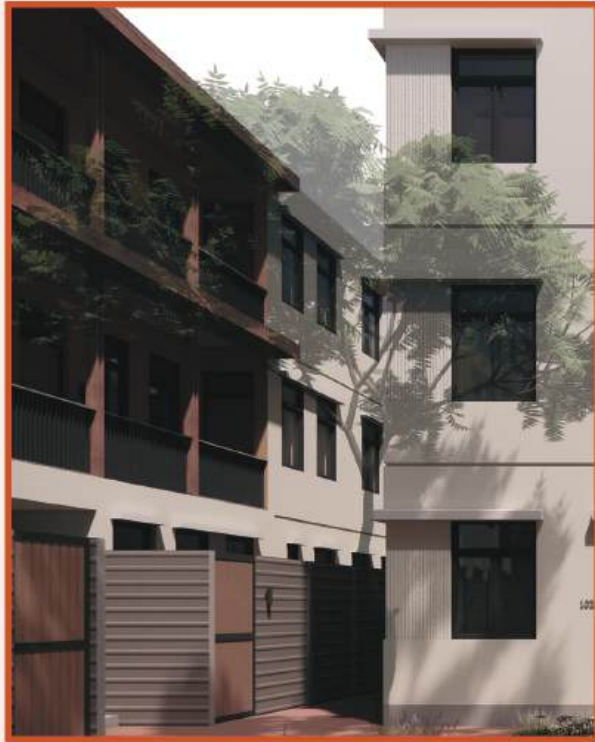
Disclaimer - All illustrations and photographs contained in this brochure are the artist's impression only. The Developer reserves the right to modify any part or parts of the project or the building as directed or approved by the architects and/or the relevant authorities. All plans, layout, information and specifications are subject to change without notification and cannot form part of an offer or contract.

# 1 BEDROOM UNIT FLOOR PLANS



## 1 BEDROOM D

INDOOR AREA	372 SQ.FT
OUTDOOR AREA	4 SQ.FT
<b>TOTAL AREA</b>	<b>376 SQ.FT</b>



## 1 BEDROOM E

INDOOR AREA	528 SQ.FT
OUTDOOR AREA	4 SQ.FT
<b>TOTAL AREA</b>	<b>532 SQ.FT</b>



## 1 BEDROOM F

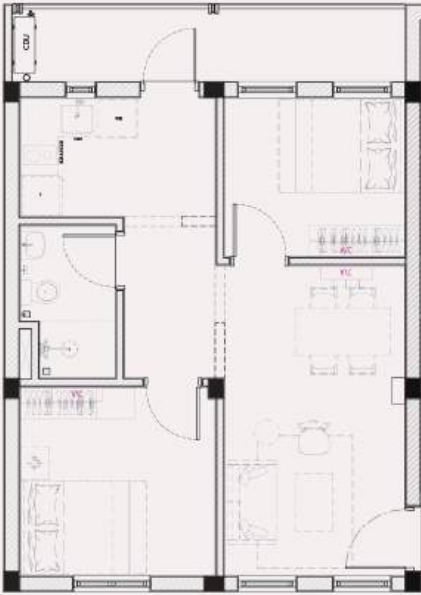
INDOOR AREA	423 SQ.FT
OUTDOOR AREA	0 SQ.FT
<b>TOTAL AREA</b>	<b>423 SQ.FT</b>



## 1 BEDROOM G

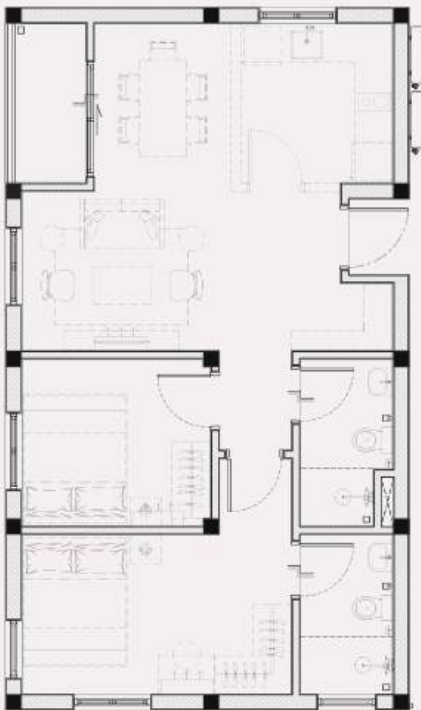
INDOOR AREA	348 SQ.FT
OUTDOOR AREA	120 SQ.FT
<b>TOTAL AREA</b>	<b>468 SQ.FT</b>

## 2 BEDROOM UNIT FLOOR PLANS



### 2 BEDROOM A

INDOOR AREA	565 SQ.FT
OUTDOOR AREA	85 SQ.FT
TOTAL AREA	650 SQ.FT



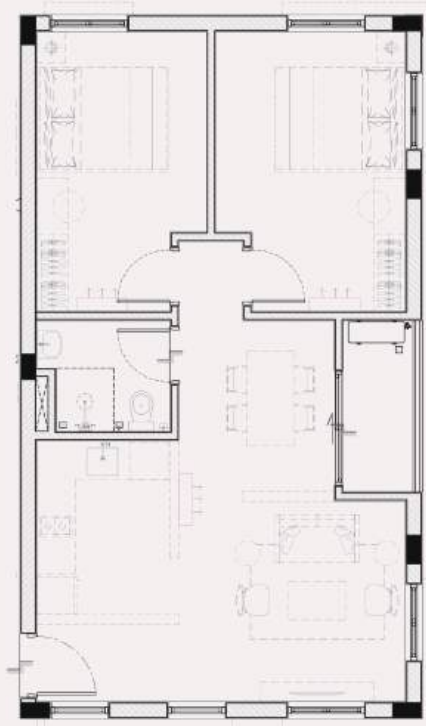
### 2 BEDROOM B

INDOOR AREA	727 SQ.FT
OUTDOOR AREA	57 SQ.FT
TOTAL AREA	784 SQ.FT



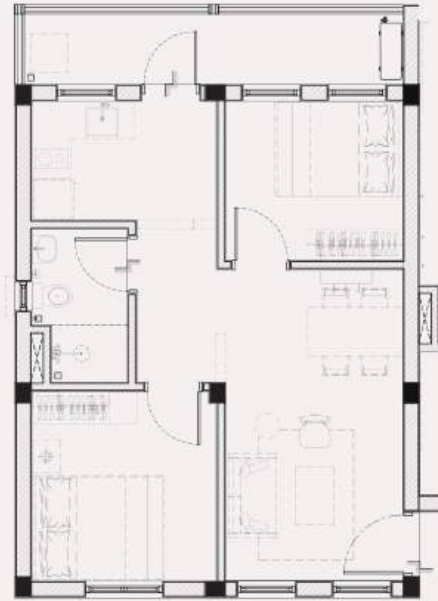
2 BEDROOM UNIT

## 2 BEDROOM UNIT FLOOR PLANS



### 2 BEDROOM C

INDOOR AREA	711 SQ.FT
OUTDOOR AREA	36 SQ.FT
TOTAL AREA	747 SQ.FT



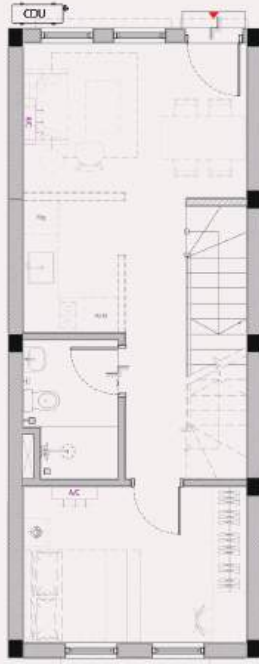
### 2 BEDROOM D

INDOOR AREA	544 SQ.FT
OUTDOOR AREA	84 SQ.FT
TOTAL AREA	628 SQ.FT

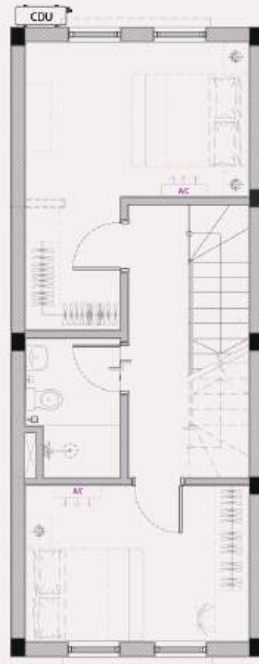
2 BEDROOM UNIT



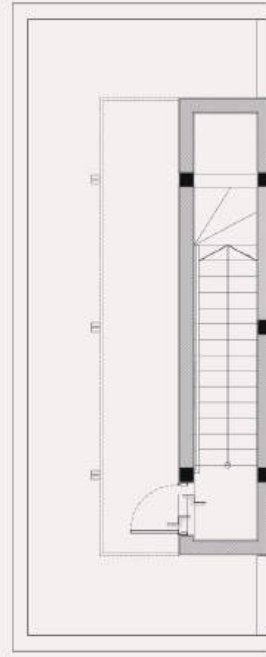
# TOWNHOUSE UNIT FLOOR PLANS



GROUND FLOOR



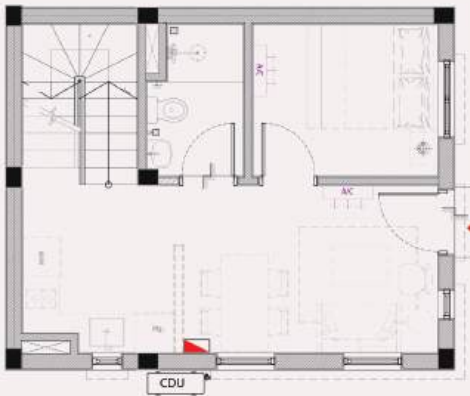
FIRST FLOOR



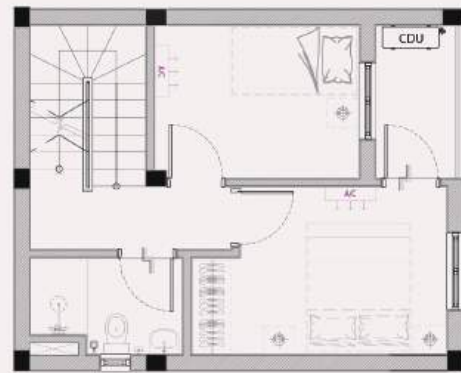
ROOF TERRACE

## TOWNHOUSE A

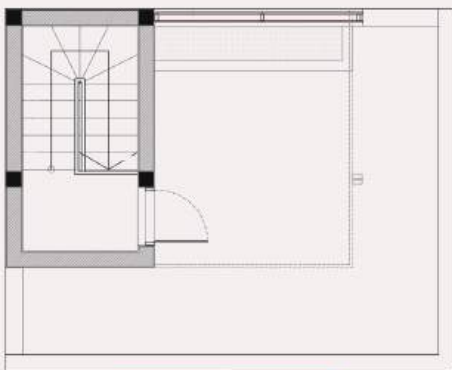
INDOOR AREA	1161 SQ.FT
OUTDOOR AREA	393 SQ.FT
<b>TOTAL AREA</b>	<b>1554 SQ.FT</b>



GROUND FLOOR



FIRST FLOOR



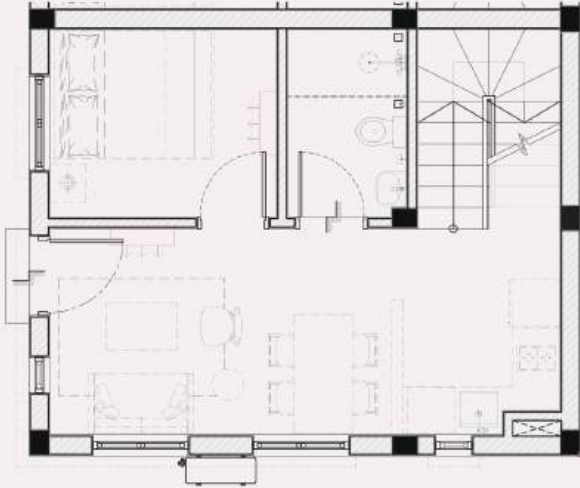
ROOF TERRACE

## TOWNHOUSE B/C

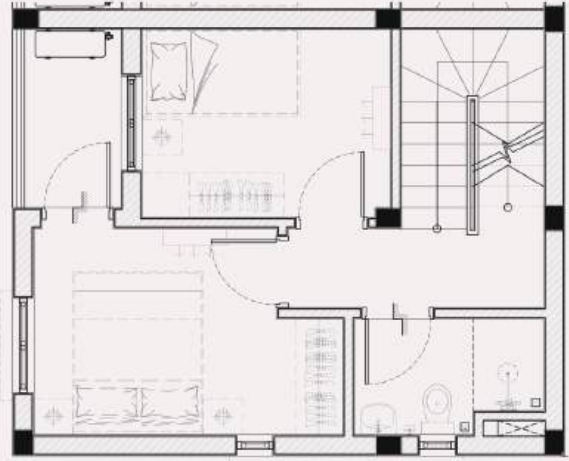
INDOOR AREA	886 SQ.FT
OUTDOOR AREA	358 SQ.FT
<b>TOTAL AREA</b>	<b>1244 SQ.FT</b>



# TOWNHOUSE UNIT FLOOR PLANS



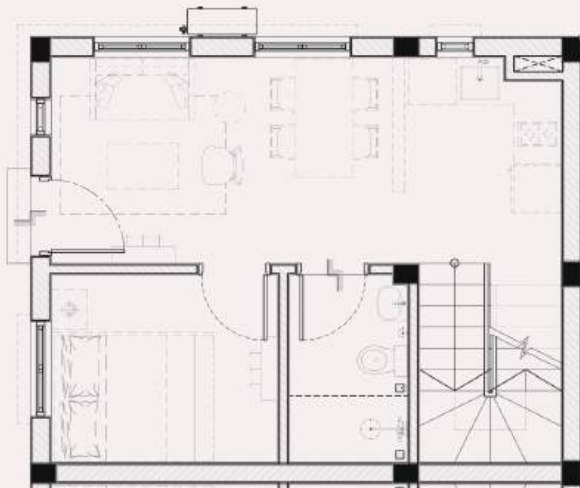
GROUND FLOOR



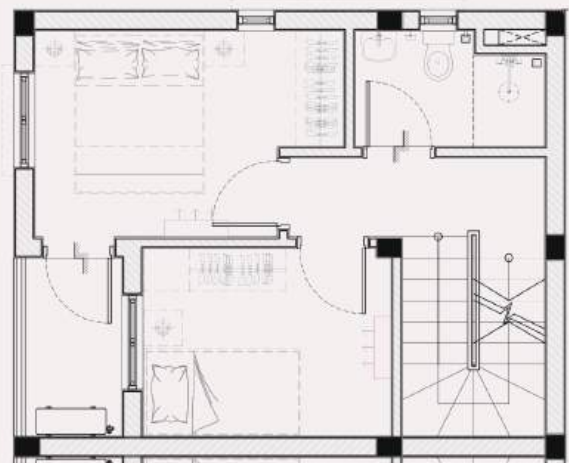
FIRST FLOOR

## TOWNHOUSE D

INDOOR AREA	909 SQ.FT
OUTDOOR AREA	352 SQ.FT
TOTAL AREA	1261 SQ.FT



GROUND FLOOR

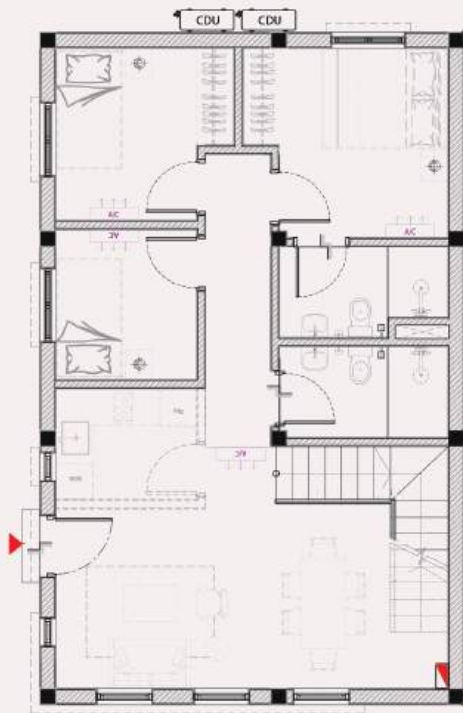


FIRST FLOOR

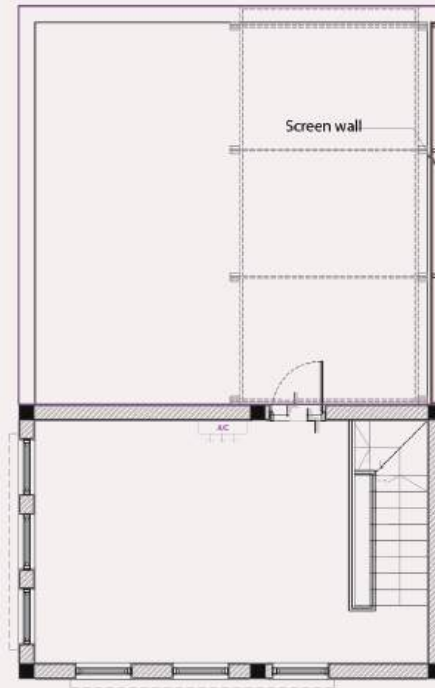
## TOWNHOUSE E

INDOOR AREA	909 SQ.FT
OUTDOOR AREA	352 SQ.FT
TOTAL AREA	1261 SQ.FT

# VILLA FLOOR PLANS



GROUND FLOOR



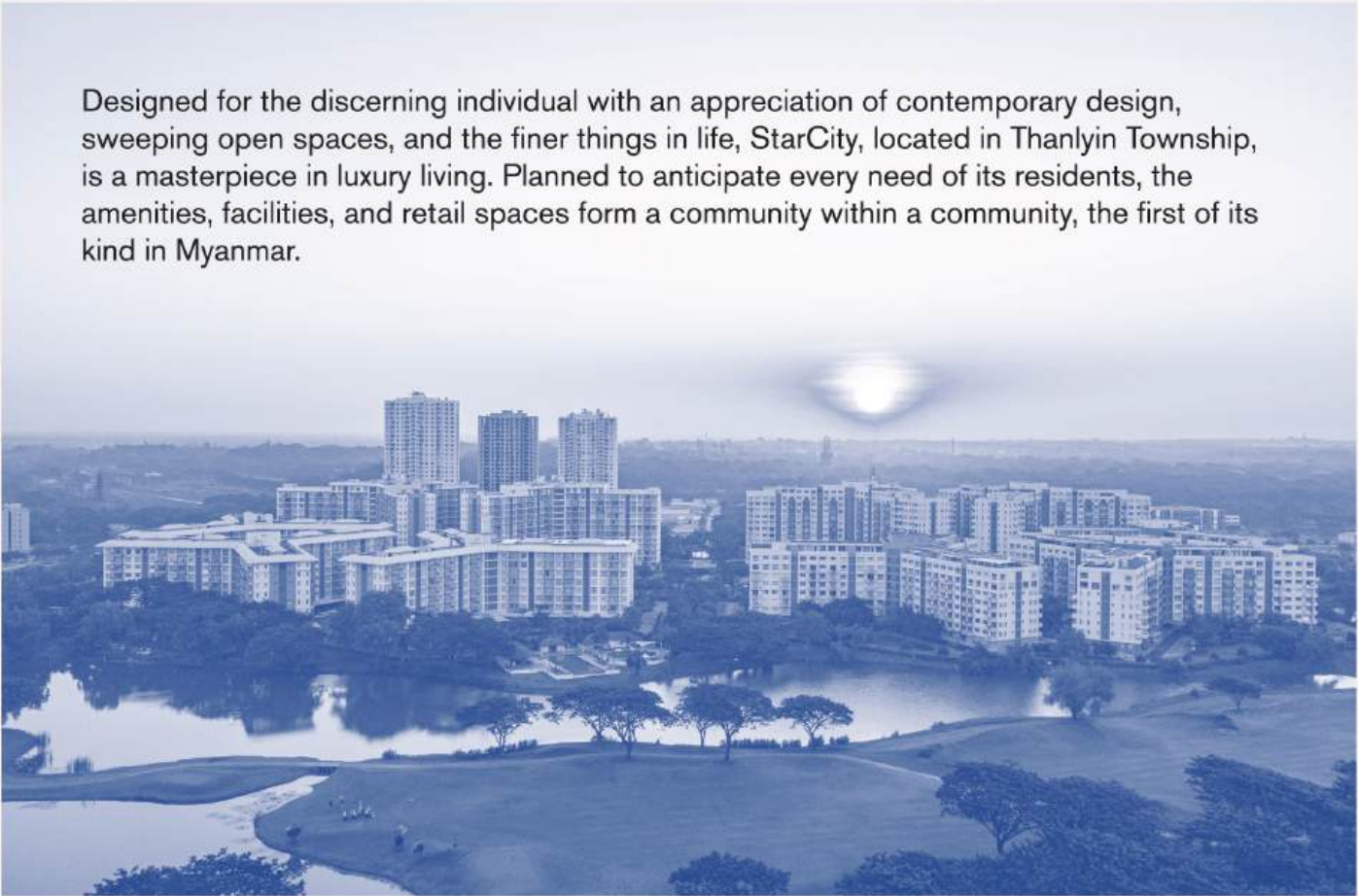
ROOF TERRACE

## VILLA

INDOOR AREA	1178 SQ.FT
OUTDOOR AREA	495 SQ.FT
TOTAL AREA	1673 SQ.FT



Designed for the discerning individual with an appreciation of contemporary design, sweeping open spaces, and the finer things in life, StarCity, located in Thanlyin Township, is a masterpiece in luxury living. Planned to anticipate every need of its residents, the amenities, facilities, and retail spaces form a community within a community, the first of its kind in Myanmar.



Nestled within a serene landscape, StarCity epitomizes the essence of family bonding and cherished memories. Committed to crafting an unparalleled living experience, StarCity presents an array of amenities and facilities meticulously designed to enrich your lifestyle and foster unforgettable moments with loved ones.

At StarCity, the pursuit of excellence extends beyond mere amenities—it embodies a commitment to creating cherished moments and lifelong memories. Elevate your family living experience and embrace a lifestyle where every day is an opportunity to thrive, connect, and savor the beauty of shared moments amidst a flourishing community.

Welcome to StarCity—where cherished memories are woven into the fabric of everyday life.



Whether you are looking for your first home, a family home upgrade or an investment property, our property executives will be able to provide a free consultation that meets your needs and budget. Yoma Land's inventory holds a wide range of properties with various price points and locations that guarantee a good return on your investment.

So, why wait? Call : 09 777 22 33 99



## FACILITIES & AMENITIES



### The Hangar

---

The Hangar wet market and Food Court is one of a kind in Myanmar where wide range of fresh produce are featured alongside a traditional style tea shop. Get your daily groceries and sit down for a traditional Myanmar breakfast at the Hangar before starting your day.

### River Park

---

The mesmerizing river park in StarCity sits just behind Flood Gate 1. Have your evening walks at the River park, enjoying the sunset looking over the Bago River. The best time to be there is from 4 PM to 6 PM. There are also 3 BBQ pits free to use for all residents.



### EV Station

---

Electric Vehicle charging stations are at the forefront of a transportation revolution. Not only does StarCity promote healthy living, but the facility also offers an environmentally friendly lifestyle needs. EV charging stations are in the Galaxy's underground car park offering cleaner and more sustainable mobility choices for all.

### StarCity Sports Club

---

StarCity Sports Club is Myanmar's First indoor and outdoor multi-sports complex. It has 45,000 square meter modern Sports facilities including more than 10 indoor and outdoor sporting arenas. Exploring new ways of spending time together, Star City Sports Club was founded to promote, organize, and coordinate sports, social and other recreational activities for creating memories that last a lifetime.



### VEGGIE FARM

---

Discover the Freshest, Healthiest and the most sustainable Veggies in Town! Pun Hlaing and StarCity Veggie farms use the highest standards of farming, prioritizing the health and safety of both our consumers and the land we grow our veggies on. From seeds to harvest, our methods are guided by sustainable practices (GAP) also known as Good Agricultural Practices that minimize environmental impact.

Another quality project of



**StarCity Sales Gallery**

Kyaik Khauk Pagoda Road, Thanlyin Township,  
Yangon, Myanmar.

**09 777 22 33 55, 09 777 22 33 66, 09 777 22 33 99**