

STARVILLAS
Your next best address



StarCity Yangon, Kyaik Khauk Pagoda Road,
Thanlyin Township, Yangon.
09-777 22 33 99
starcitysales@yomaland.com
www.starcityyangon.com

A THOUGHTFULLY CONCEIVED MASTER PLAN



Total Development Area

9.19 Acres

Number of Villas

Phase 1

32 Villas

Phase 2

11 Villas



THE HEIGHT OF REFINEMENT



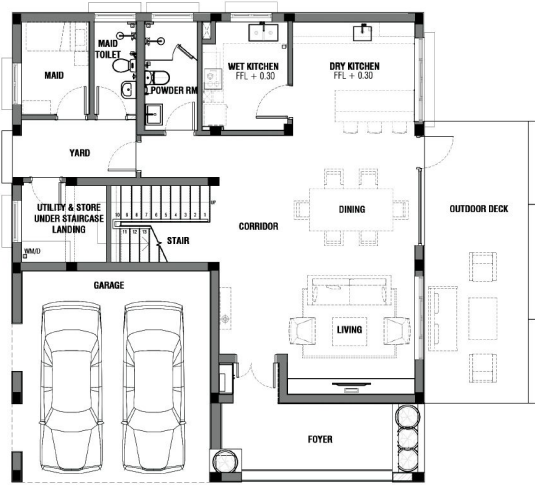
Disclaimer

"All illustrations and photographs contained in this brochure are artist's impression only. The Developer reserves rights to modify any part or parts of the project or the building as directed or approved by the architects and/or the relevant authorities. All plans, layout, information and specifications are subject to change without notification and cannot form part of an offer or contract."

TYPICAL FLOOR PLANS

House Area (GFA)	Sq. Ft.	Sq. M.
Ground Floor	1963.98	182.46
First Floor	2119.52	196.91
Total Floor Area	4083.50	379.37
Land Area	6,400	594.6

Scan for Virtual Tour



Ground floor

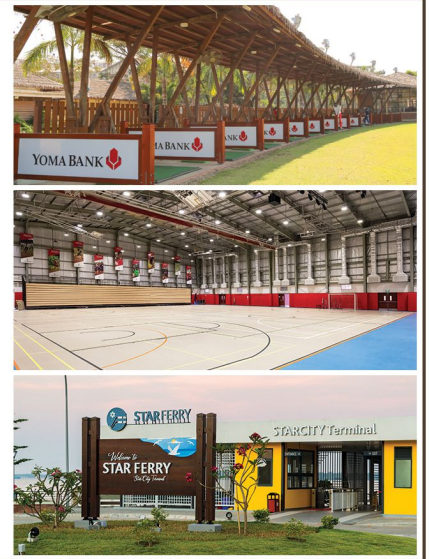


First floor



Facilities and Amenities in StarCity

- 9 Holes Golf Course
- Swimming Pools, Gyms and Sports Facilities
- Kids Playground (Indoor & Outdoors)
- Coffee Shop, Bakery and F&B Outlets
- Beauty Spa and Hair Saloon
- Fashion and Retail Outlets
- Super Market, Wet Market and Food Court
- Pharmacy and Healthcare
- Bank and ATMs
- River Park and other gardens
- Jetty
- Shuttle Bus within Estate



We have developed a strong reputation in the Myanmar residential market through our emphasis on design innovation, product excellence and high building standards. Our approach focuses on developing large scale residential developments that transform vacant land at the periphery of the city into vibrant communities. StarCity and Pun Hlaing Estate are prime examples of this rewarding strategy, allowing us to benefit from our strength in master planning and the flexibility in developing different types of products at its desired pace.

