



GALAXY
TOWERS

Epitome of
Luxury Living

Hotline

09 777 22 33 55

09 777 22 33 66

sales@yomaland.com

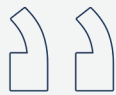
Elevate Your Lifestyle.



Indulge in the epitome of elegance and sophistication with the unparalleled views of our condo rooms that will leave you in awe. Every room in the Galaxy is designed to capture the beauty of nature's finest panoramas.

Discover a sanctuary of serenity, where each sunrise and sunset paints a stunning masterpiece across the skyline. From the mesmerizing river against the twinkling city lights to the luxurious green gardens, our condo rooms offer a feast for the eyes.

Elevate your lifestyle and embrace a world of boundless beauty. Own a piece of paradise now.



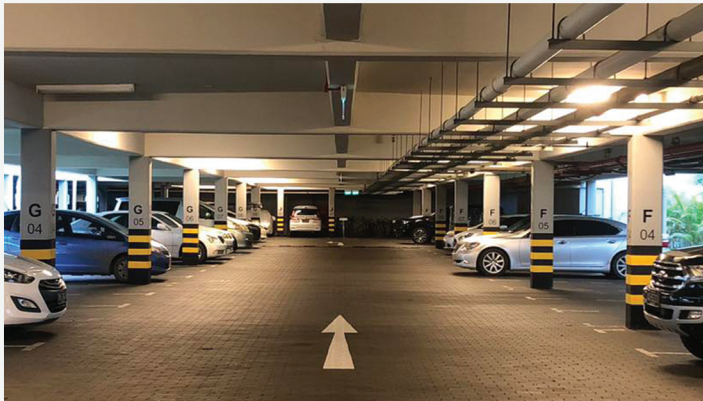
Luxury redefined

Not only does the Towers boasts breathtaking views of the Yangon skyline, but also expertly designed unit layouts, create spaces that maximized both comfort and style. The towers are integrated with High-end infrastructures such as the LPG gas system, security intercoms, fire safety and mechanical exhausts that provide a luxurious feel that is unmatched in the industry.



Being the highest towers not only in height but also with the level of standard, the services come with exclusive offers of amenities and facilities that cater to the sophisticated lifestyles of its owners.

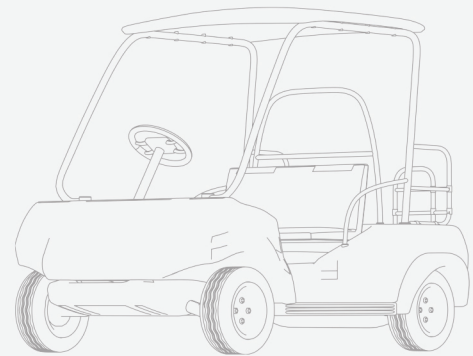
In addition, the commitment of unparalleled service is evident in catering a dedicated concierge service, buggy shuttle services and exclusive memberships to the StarCity International sports club.



In the Galaxy, it's not just the rooms that will captivate your senses. Step outside your doorstep and find yourself amidst a plethora of modern amenities and facilities.

The international multi-complex sports club, trendy restaurants, chic boutiques, bustling farmers market are just a few minutes away to indulge yourself in the vibrant energy. If you prefer tranquility, escape to the nearby River Park for a breath of fresh air or take a sunset ride on the Star Ferry Jetty to enjoy the river breeze.

In the Galaxy, you get to live the best of both worlds.



Elevate your lifestyle and embrace a world of boundless beauty.

Own a piece of paradise now.



The Hangar wet market and Food Court is one of a kind in Myanmar where wide range of fresh produce are featured alongside a traditional style tea shop. Get your daily groceries and sit down for a traditional Myanmar breakfast at the Hangar before starting your day.

.....the Hangar.....

.....River Park.....

The mesmerizing river park in StarCity sits just behind Flood Gate 1. Have your evening walks at the Riverpark, enjoying the sunset looking over the Bago River. The best time to be there is from 4pm to 6pm. There are also 3BBQ pits free to use for all residents.



Electric Vehicle charging stations are at the forefront of a transportation revolution. Not only does StarCity promote healthy living, but the facility also offers an environmentally friendly lifestyle needs. At Galaxy, EV charging stations are in the underground car parking offering cleaner and more sustainable mobility choices for all.

.....EV Station.....

.....Star Ferry.....

The Star Ferry Jetty and Privately owned Water Ferry Service is an additional transportation hub for StarCity. The Jetty connects StarCity to the heart of Yangon, Pansodan in a matter of minutes.

