

# ESTELLA

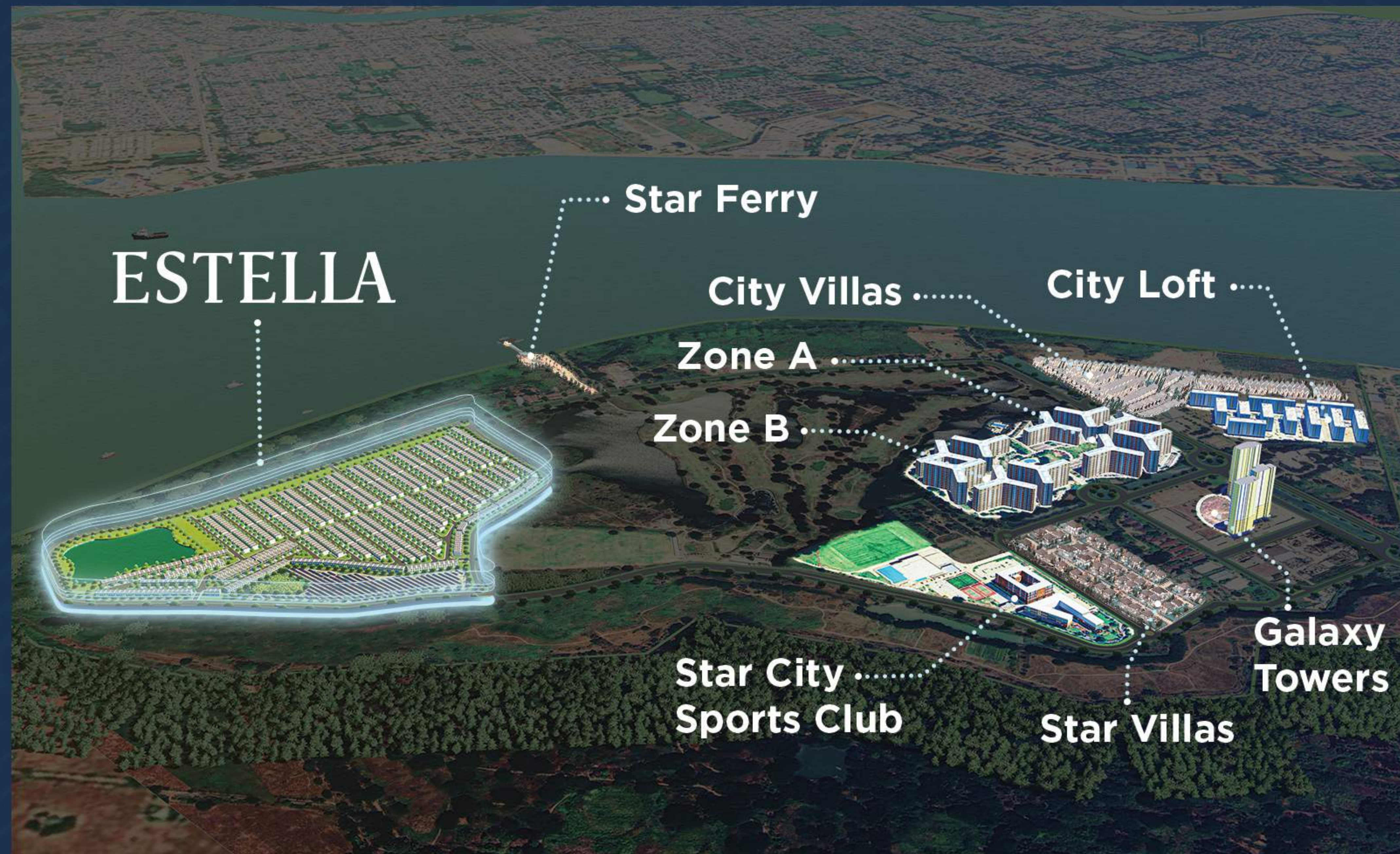
CONTEMPORARY TOWNHOUSES

---

MODERN LIVING, TIMELESS COMFORT







## A Perfect Blend of **Style and Comfort**

A collection of exquisite contemporary townhouses, where modern design meets everyday comfort. Located in the vicinity of a vibrant urban neighborhood, these townhouses offer a unique combination of style, functionality, and convenience. With its sleek architecture, thoughtful layout, and modern finishes, they're the perfect place to call home.

As Estella residents you are also able to enjoy vibrant and engaged communities with events forming a big part of our get togethers. From seasonal events to outdoor movies nights, regular fresh markets, summer night markets, picnics and unplugged music, there's always something happening that will bring residents together and create lasting memories.



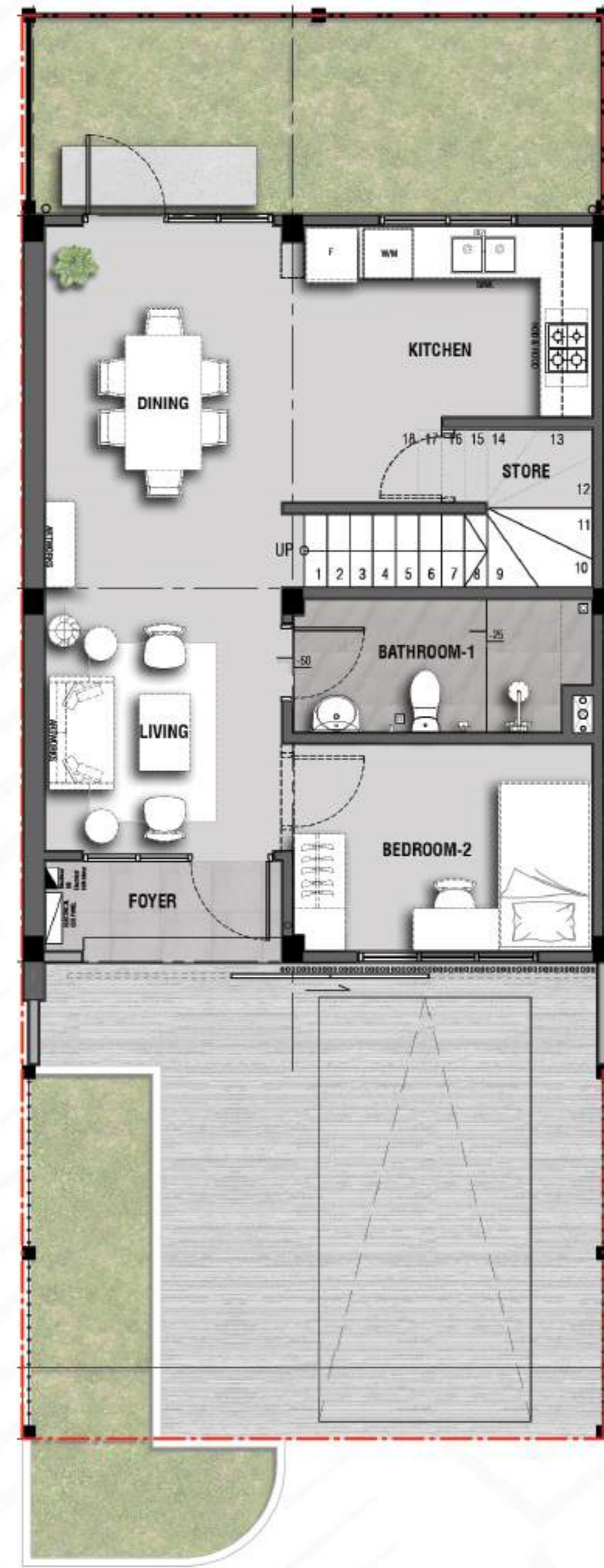
Where Community  
**Thrives & Lives Unite**



## End Unit

Plot Area  
**1,235.58 SQ. FT.**

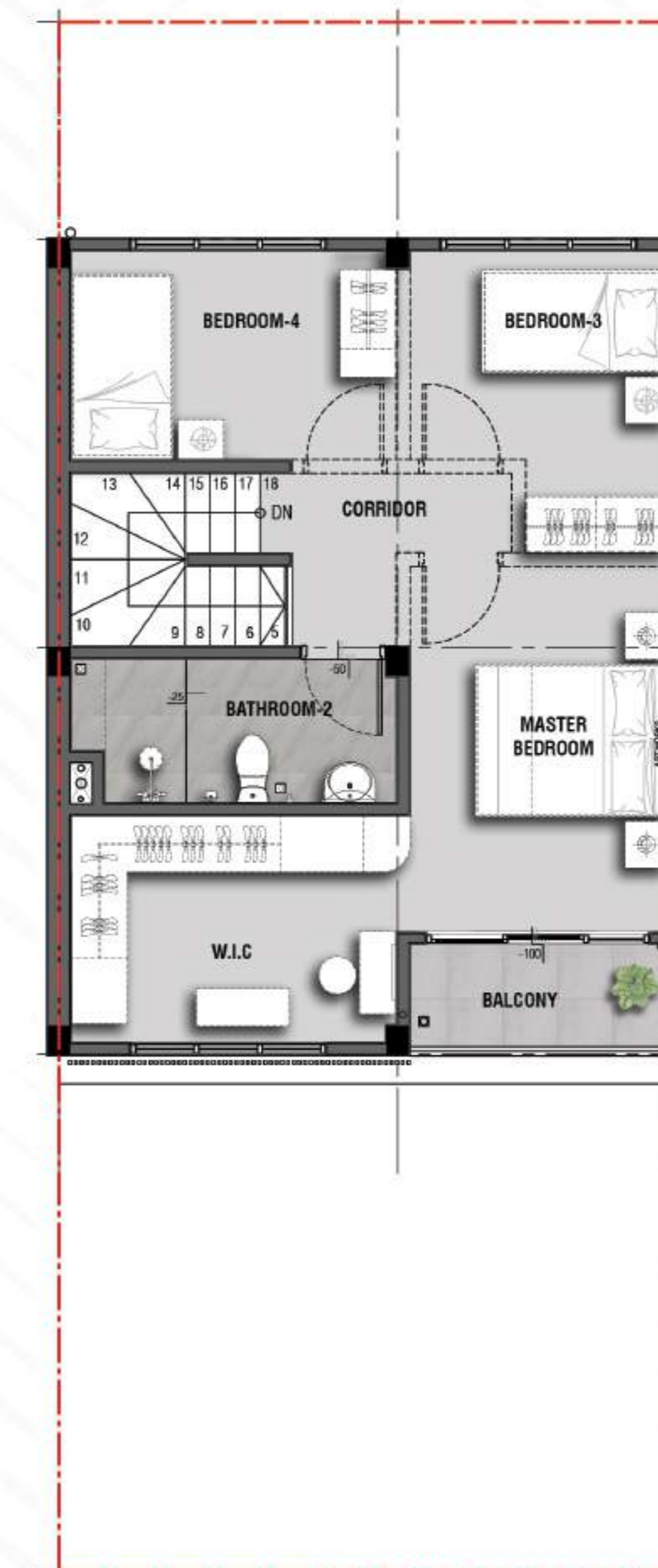
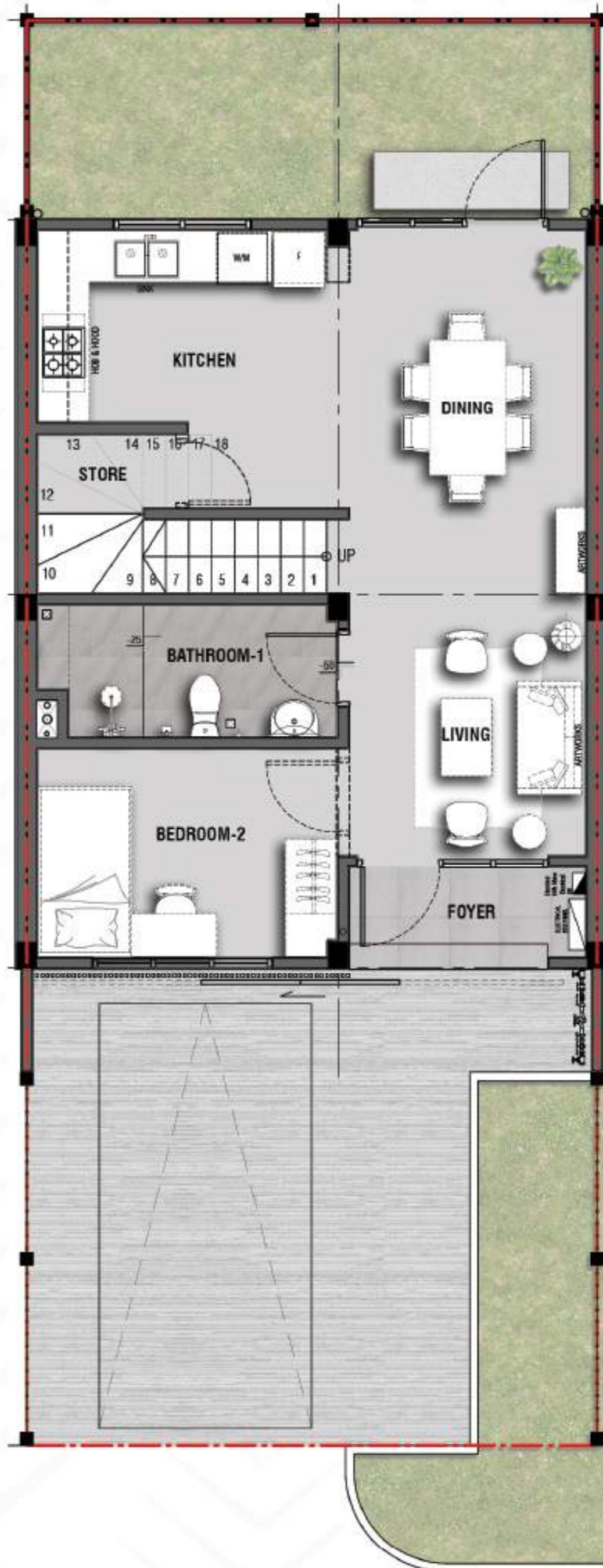
Floor Area  
**1,276.92 SQ. FT.**



## Row Unit

Plot Area  
**1,210.00 SQ. FT.**

Floor Area  
**1,276.92 SQ. FT.**







## The Hangar

The Hangar wet market and Food Court is one of a kind in Myanmar where wide range of fresh produces are featured alongside a traditional style tea shop. Get your daily groceries and sit down for a traditional Myanmar breakfast at the Hangar before starting your day.

## River Park

The mesmerizing river park in StarCity sits just behind Flood Gate 1. Have your evening walks at the Riverpark, enjoying the sunset looking over the Bago River. The best time to be there is from 4pm to 6pm. There are also 3BBQ pits free to use for all residents.



## EV Station

Electric Vehicle charging stations are at the forefront of a transportation revolution. Not only does StarCity promote healthy living, but the facility also offers an environmentally friendly lifestyle needs. EV charging stations are in the Galaxy's underground car park offering cleaner and more sustainable mobility choices for all.

## Jetty

The Star Ferry Jetty and Privately owned Water Ferry Service is an additional transportation hub for StarCity. The Jetty connects StarCity to the heart of Yangon, Pansodan in a matter of minutes.



Elevate your lifestyle and embrace a world of boundless beauty.

*A Greener Tomorrow Starts Here*

Hotline :  
**09 777 22 33 55,**  
**09 777 22 33 66**  
[sales@yomaland.com](mailto:sales@yomaland.com)